

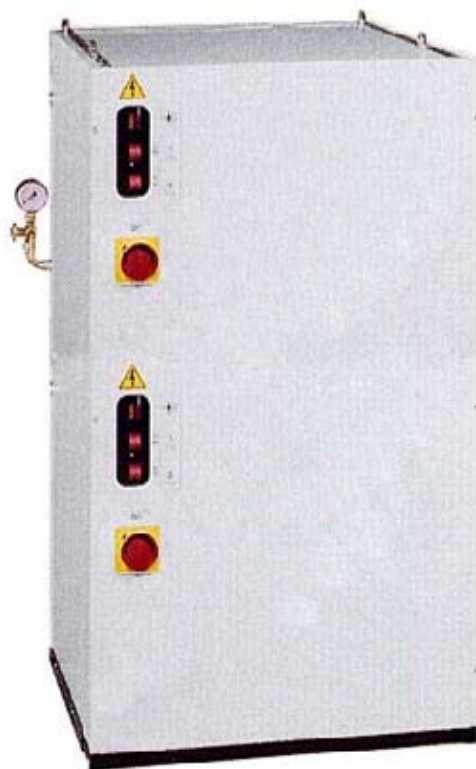


NUSTRI

MADE IN ITALY



Ironing machines for knitwear factories, laundries and clothes factories



MOD. 179

Big electric steam generator with **n. 2** automatic boiler **30 lt** each vertical assembled, Complete of **n. 2** electropumps for water supply , two heating elements groups for each boiler. Total steam production **98 kg/h**. Arranged for the connection with centralized machines.





Ironing machines for knitwear factories, laundries and clothes factories

TECHNICALS CHARACTERISTICS	MOD.	179
BOILER	Lt.	30 + 30
ELECTROPUMP Volts.220	Kwatt.	0,6 + 0,6
STEAM PRODUCTION	Kg/h	98 *
BOILER DISCHARGE	Ø	½"
STEAM PRESSURE	bar	6
WATER INLET	Ø	3/8"
TOTAL ABSORPTION BOILERS	Kwatt.	36 + 36 *
MAXIMUM TOTAL POWER	Kwatt.	73 *
ELECTRIC SUPPLY	Volts.	380+N+T *
TENSION	Hz.	50 *
NET WEIGHT	Kg.	200
DIMENSIONS H x L x D	Cm.	180 x 85 x 85
* Different technicals characteristics are available on demand.		

Complete of

- ◆ General switch
- ◆ One switch for each heating elements group
- ◆ Two automatic boiler lt 30 each
- ◆ One float control level for each boiler
- ◆ One electropump for each boiler
- ◆ N. 6 heating elements for each boiler
- ◆ One steam exit tap
- ◆ One discharge tap for each boiler
- ◆ Inox steel tank for supply and condensate recovery

Encombrance

